

A Christian College and K-12 Public Schools Collaboration: Field Education

Who are we?

- Peggy Gibbons,
MSW
- Assistant Professor of Social
Work with a focus on Policy,
Macro Practice and Human
Rights and Social Justice
- Field Faculty
- MSW Supervisor



Who are we?

- Erin Johnson, MSW
- Assistant Professor with a focus on Micro Level Practice, Trauma Informed Care and Field Education
- BSW Field Director






The Partnership

- George Fox University School of Social Work and Newberg Public Schools (NPS)
- University Focus
 - Partnership with NPS as a priority
- School of Social Work Field Education
 - Based on student interest in school social work
 - Understanding our community needs and school districts needs
 - Belief in social work students and their capacity to create change and provide needed support



Learning Outcomes

- Navigate challenging conversations and partnerships between Christian social workers and public community partners in our current polarizing culture.
 - Identify ways to help Christian social work students thrive in internships and employment within progressive community organizations and school systems.
 - Develop an active community partnership between a small private Christian College and a Public School System through an extensive internship partnership.
- 

The History of our Partnership

- Personal histories as parents and volunteers gave us first glimpse into schools
- Role as School Counselor provided insight into district operations and student needs
- Role as Field Director provided insight into service gaps
- Community Focus
 - Suicide Prevention, Destigmatizing of Mental Health
 - Drug and Alcohol Recovery
 - Access to services and community partnerships

Our Community: Newberg Public Schools

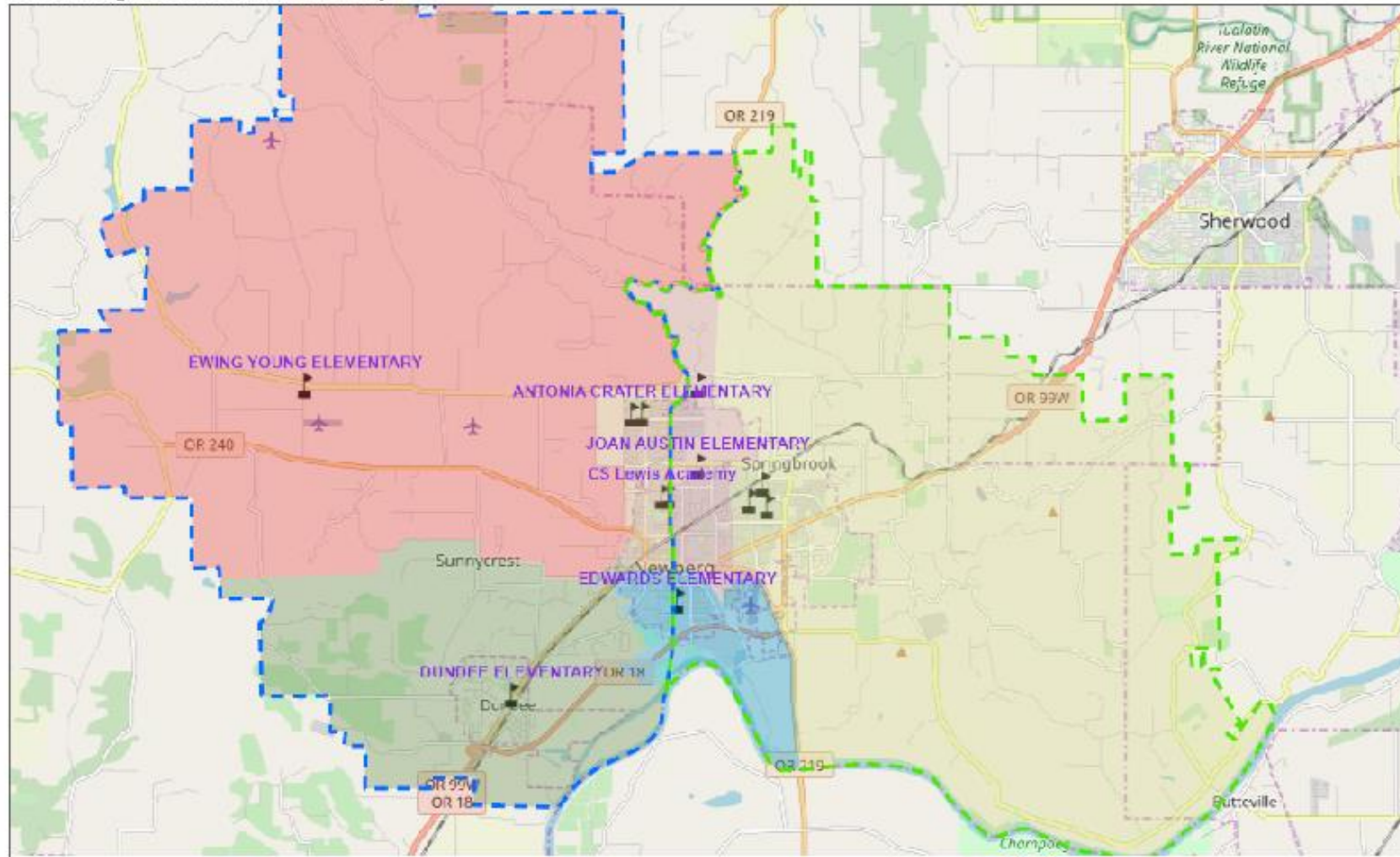


Newberg is located 25 miles southwest of Portland, Oregon. What once was a small town rooted in Christian heritage, demographics are evolving with a recent mill closure and explosion of the wine industry. Newberg is considered a bedroom community to Portland, is a short distance from the Oregon coast and Mt. Hood.

Newberg Public Schools serves 4,835 students across an 85 square mile area in the Chehalem Valley including the cities of Newberg and Dundee, rural Yamhill County and parts of Washington and Clackamas Counties.



Newberg School District Map




School of Social Work: George Fox University



- BSW & MSW Program
- 4 BSW Professors / 8 MSW Professors
- ~100 BSW students, ~75 MSW students
- Dual Locations
- Integration of Faith and Social Work Practice
- Diverse Field Placements



Partnership Development: Field Education

- Where we started – Fall 2018
 - With School District Employees
 - Identifying the needs of the schools (collectively and individually)
 - Answering the questions
 - What is social work?
 - What do social workers do in schools?
 - How does your university's lifestyle contract fit with social work education and profession?
 - How do you prepare your students to work in inclusive diverse settings?
- 




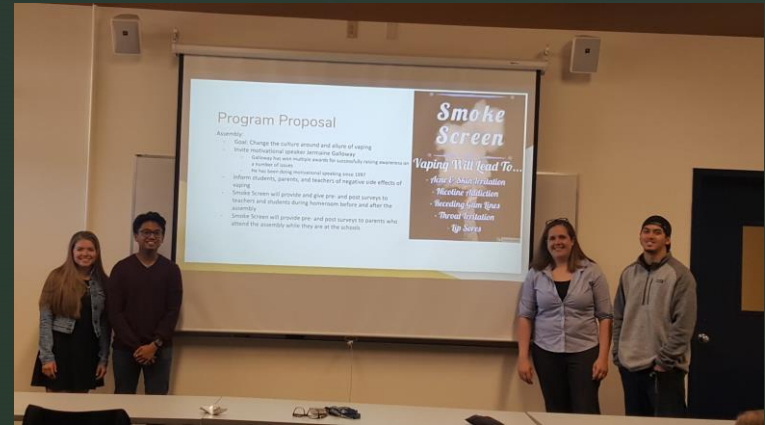
Partnership Development: Field Education

- Pilot Internships – Spring 2019
 - Growth and Development
 - Meetings with Individual Schools
 - What are their strengths, needs, and areas for support?
 - What type of internship are they looking for? / What is the best fit?
 - Placement of BSW Juniors, BSW Seniors, MSW Foundation, MSW Concentration
 - New Supervisor Training
- 



Partnership Development: Macro Class Small Group Projects

- District Input
 - Development of the Assignment
 - Getting Students Invested
 - Research-based Proposals
 - Six Separate Groups: researched topic, imagined a social work intervention, created a proposal
 - Group written proposals and presentations
- 



Macro Class Small Group Projects

Student Feedback

- Macro prepared me to work in a school by teaching me how to conceptually understand and work through challenges and barriers in the K-12 system. It also reinforced and made the idea of working in a multi-disciplinary team real by putting it into a tangible context. It was also just a really fun project that made me think.
- I gained a deeper understanding of the complex network of interactions in schools. Without this project, I would not have been prepared to work in schools because I would have been completely lost in the system.
- Our group lesson plan project helped prepare me for knowing how to make a lesson plan for a group as I now start to plan for the group I will be leading.



Macro Class Small Group Projects District Feedback

“In regards to the presentations last spring, I found them to be very inspiring, helpful, and relevant to the needs that our District, as well as many other districts have. In fact, some of those presentation helped me to explore some way in how to develop a project, how to gather data, how to ask for support, and overall, how to put a full proposal together.”



Partnership in Action:

- 2019-2020 School Year Internships
 - 5/6 Elementary Schools with Social Work Interns (4 junior BSW, 1 Senior BSW, 1 Foundation MSW, 1 Concentration MSW)
 - 2/2 Middle Schools with Social Work Interns (1 junior BSW, 1 Senior BSW, 1 Concentration MSW)
 - District Wide Orientation for Social Work Student Interns
 - MSW Supervision Groups
- 

District Employee Feedback


- But most importantly, I would say that their compassion, commitment, and knowledge have been most impressive when it comes to building strong relationships with our students. *District Program Director*
- At this point, the GFU Social work interns are ingrained in our school and part of what we do, which makes them part of us and what we are trying to achieve as educators. They help us effect positive change everyday. *Special Education Teacher*

District Employee Feedback

- We introduce them as extensions of our counseling department just here two or three days a week. It has been a positive at our school because students see them as another trusted adult. They are in many counseling talks with students as the assistant to an assigned counselor. *Building Principal*
- With guidance, they help students feel heard and empowered to solve interpersonal conflicts. They join in running groups. They help gather data on interventions. Graduate students also bring a fresh eye and a different perspective to the school system. *School Counselor*



Lessons Learned

- Challenges:
 - Recognizing School Counselor Biases
 - Social Work Internships in a Student-Teacher Mindset Environment
 - Impressions about social work in schools
 - Student's knowledge of role and understanding of professionalism
 - Social Work Faculty perception of the partnership
- 



Lessons Learned

- Successes:
 - Strong Communication between District Administration and BSW Field Education leads to a healthy partnership
 - Matching students to internships in schools that value social work
 - 11 Students in placement for the 2019-2020 year, increased from 3 in the 2018-2019 year
 - Meaningful work our interns get to do
 - Increased understanding about social work roles and responsibilities for school staff
- 

References

Bersamin, Fisher, Gaidus, & Gruenewald. (2016). School-based health centers' presence: The role of school and community factors. *American Journal of Preventive Medicine, 51*(6), 926-932.

Cavell & Hughes. (2000). Secondary prevention as context for assessing change processes in aggressive children. *Journal of School Psychology, 38*(3), 199-235.

De Jong, D. (2018). Christian social work students and gender variance: An exploratory study. *Social Work and Christianity, 45*(4), 83-97.

Knopf, J., Finnie, R., Peng, Y., Hahn, R., Truman, B., Vernon-Smiley, M., & Fullilove, M. (2016). School-based health centers to advance health equity: A community guide systematic review. *American Journal of Preventive Medicine, 51*(1), 114-126.

Haddock, S., Schindler-Zimmerman, T., Thomas, A., Weiler, L., Krafchick, J. & Fredrickson, G. (2017). A qualitative analysis of mentee experiences in a campus-based mentoring program. *Journal of Youth Development, 12*(4), 61-80.

Harris, H. & Yancey, G. (2017). Values, dissonance, and rainbows: Practice tips for Christian social workers in a polarized world. *Social Work and Christianity, 44*(1/2), 123-142.

References

Joseph, A., Slovak, K., Broussard, C., Webster, P. (2012). School social work and multiculturalism: Changing the environment for success. *Journal of Ethnic and Cultural Diversity in Social Work, 21*(2), 129-143.

Sherwood, D. (2017). Christianity and social work practice with LGBTQ clients: Dealing competently, ethically, and faithfully with hard issues: The difficult but necessary road. *Social Work and Christianity, 44*(1/2), 3-10.

Smith, M., & Brun, C. (2006). An analysis of selected measures of child well-being for use at school and community-based family resource centers. *Child Welfare, 85*(6), 985-1010.

Teasley, M. & Cruz, D. (2014). Diversity and related services personnel: Challenges, strategies, and solutions through culturally competent collaborative practice. *School Social Work Journal, 39*(1), 51-72.

Weiler, L., Zimmerman, T., Haddock, S., & Krafchick, J. (2014). Understanding the experience of mentor families in therapeutic youth mentoring. *Journal Of Community Psychology, 42*(1), 80-98.