

Faith Based, Non Shelter Approaches to Homelessness

Eric Saunders, MSW, LCSW
Executive Director, New Hope Ministries, Dillsburg, PA

What does homelessness
look like?

Inner cities



Homeless Shelters



Family Shelters



Car camping



All night grocery stores



Camp Grounds



Construction sites



Truck stops



Homeless camps



Storage units



Abandoned houses



Residence motels



Couch surfing



Camp grounds



Trailer parks



Additional information about homelessness

- 39% of cities cited domestic violence as the primary cause of family homelessness (Source: U.S. Conference of Mayors, 2007)
- An estimated 25 to 50% of people experiencing homelessness also have a history of incarceration (Source: DOJ, 2015)
- About 11% of the adult homeless population are veterans (Source: U.S. Department of Veterans Affairs)

Health consequences of homelessness

- Addiction
- Mental Illness
- Chronic and acute disease
- Malnutrition
- Violence
- Premature death*

Source: Homeless Outreach & Housing First, Lessons Learned,
Jay Levy

Luke 9:58

Jesus replied, "Foxes have dens and birds have nests, but the Son of Man has no place to lay his head."

New International Version

Deuteronomy 15:11

There will always be poor people in the land.

Deuteronomy 15:11

There will always be poor people in the land. Therefore I command you to be openhanded toward your fellow Israelites who are poor and needy in your land.

Luke 10

29 But he wanted to justify himself, so he asked Jesus, “And who is my neighbor?”

36 “Which of these three do you think was a neighbor to the man who fell into the hands of robbers?”

37 The expert in the law replied, “The one who had mercy on him.”

Jesus told him, “Go and do likewise.”

What is the definition of homelessness?

A “chronically homeless” individual is defined to mean a homeless individual with a disability who lives either in a place not meant for human habitation, a safe haven, or in an emergency shelter, or in an institutional care facility if the individual has been living in the facility for fewer than 90 days and had been living in a place not meant for human habitation, a safe haven, or in an emergency shelter immediately before entering the institutional care facility. In order to meet the “chronically homeless” definition, the individual also must have been living as described above continuously for at least 12 months, or on at least four separate occasions in the last 3 years, where the combined occasions total a length of time of at least 12 months. Each period separating the occasions must include at least 7 nights of living in a situation other than a place not meant for human habitation, in an emergency shelter, or in a safe haven. Chronically homeless families are families with adult heads of household who meet the definition of a chronically homeless individual. If there is no adult in the family, the family would still be considered chronically homeless if a minor head of household meets all the criteria of a chronically homeless individual. A chronically homeless family includes those whose composition has fluctuated while the head of household has been homeless.

Federal Register / Vol. 80, No. 233 / Friday, December 4, 2015

Housing insecurity

High housing costs in proportion to income, poor housing quality, unstable neighborhoods, overcrowding, or homelessness.

Source: NIH

What are the leading causes of homelessness?

How Many are Homeless?

Percent of People Experiencing Homelessness By Age and Sheltered Status, 2018

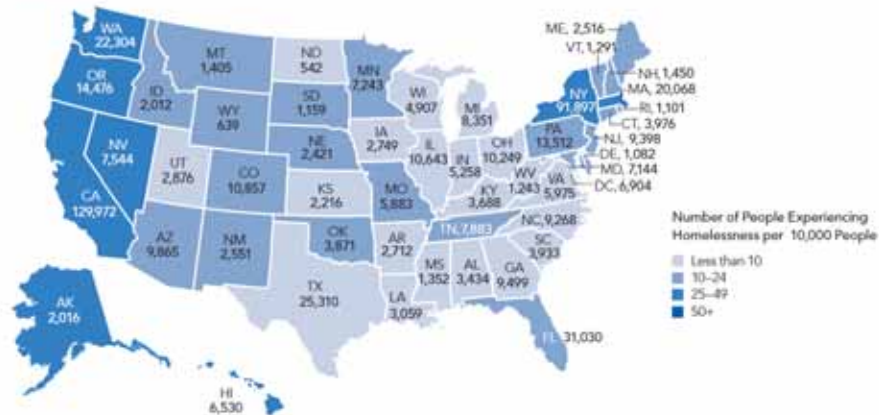
	All Homeless People		Sheltered People		Unsheltered People	
	#	%	#	%	#	%
Total	552,830	100%	358,363	100%	194,467	100%
Age						
Under 18	111,592	20.2%	101,086	28.2%	10,506	5.4%
18 to 24	48,319	8.7%	30,154	8.4%	18,165	9.3%
Over 24	392,919	71.1%	227,123	63.4%	165,796	85.3%
Gender						
Female	216,211	39.1%	160,024	44.7%	56,187	28.9%
Male	332,925	60.2%	197,025	55.0%	135,900	69.9%
Transgender	2,521	0.5%	1,108	0.3%	1,413	0.7%
Gender Non-conforming	1,173	0.2%	206	0.1%	967	0.5%

AHAR, 2018

- According to HUD, 552,883 people were counted as homeless in 2018, but according to HUD reports from 2014, nearly 1.5 million people used shelters in that year.
- These statistics don't take into account uncounted people or those who did not use a surveyed shelter program and could include those who are doubled up, unsheltered/uncounted homeless, or other groups.
- If we accept the problem of homelessness as a continuum of need, there are likely millions of people who are housing insecure, episodically homeless, or not being served in the shelter system.

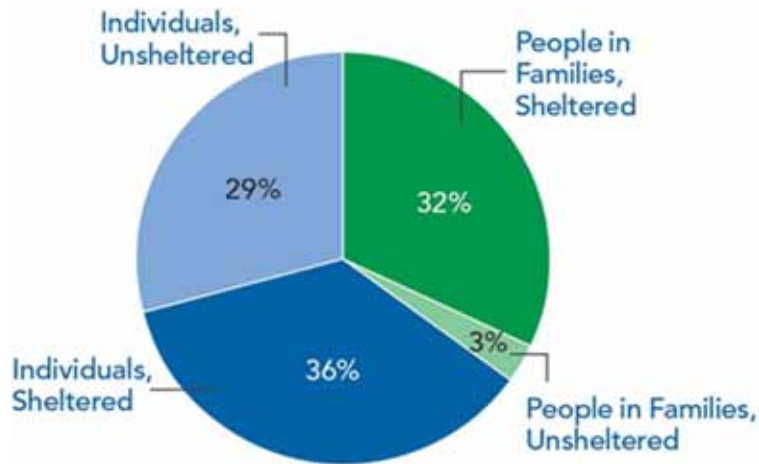
Estimates of Homeless People by State

EXHIBIT 1.6: Estimates of Homeless People
By State, 2018



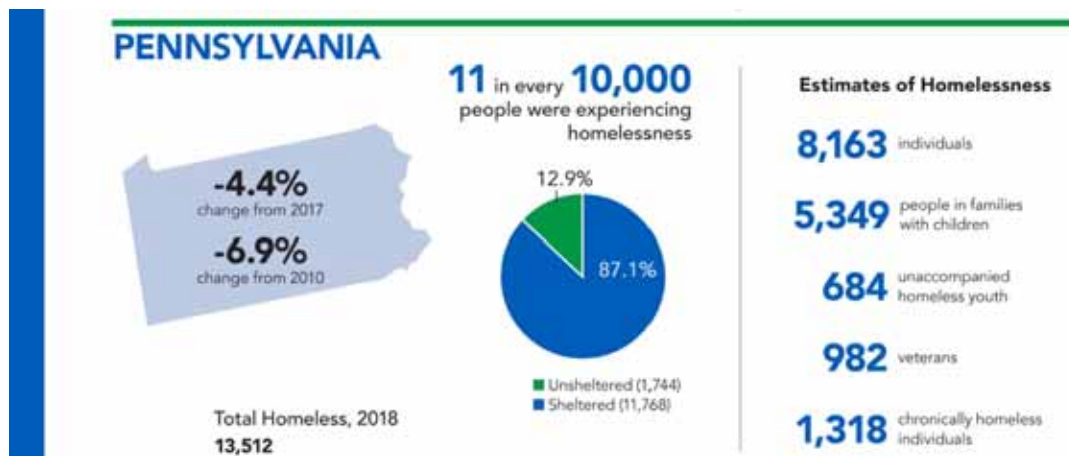
The 2018 Annual Homeless Assessment Report (AHAR) to Congress

Percent of Homeless People By Household Type and Sheltered Status, 2016



The 2016 Annual Homeless Assessment Report (AHAR) to Congress

Who are the homeless



The 2018 Annual Homeless Assessment Report (AHAR) to Congress

Thanksgiving 2015



What are the leading causes of homelessness?

- The top four causes of homelessness among individuals were (1) lack of affordable housing, (2) unemployment, (3) poverty, (4) mental illness and the lack of needed services, and (5) substance abuse and the lack of needed services.

What are the leading causes of homelessness?

- The top four causes of homelessness among individuals were (1) lack of affordable housing, (2) unemployment, (3) poverty, (4) mental illness and the lack of needed services, and (5) substance abuse and the lack of needed services.
- The top causes of homelessness among families were: (1) lack of affordable housing, (2) unemployment, (3) poverty, and (4) low wages, in that order.

U.S. Conference of Mayors

What are the leading causes of homelessness?

- For women in particular, domestic violence is the leading cause of homelessness.

U.S. Conference of Mayors

Another perspective on leading causes of homelessness

- 1st: Inability to afford rent (51.8%).
- 2nd (tied): Loss of job (33.9%)
- 2nd (tied): Alcohol and drug problems (33.9%).
- 3rd: Lack of affordable housing (30.4%)
- 4th: Family problems (23.2%)
- 77% of respondents who checked “family problems” as a cause of homelessness also checked unaffordable housing or rent and 46%, almost half, checked loss of income or job.

Source: Helen Hartnett, Ph.D., Toni Johnson, Ph.D., University of Kansas, School of Social Welfare

Lack of affordable housing

The number of households spending **50 %** or more of their income on rent is expected to rise at least **11 percent** from **11.8 million** to **13.1 million** by **2025**

Source: Enterprise Community Partners and the Harvard Joint Center for Housing Studies

A Key Driver of Worsening Affordability is Falling Incomes Among Renters



Enterprise Community Partners and the Harvard Joint Center for Housing Studies

How much should housing cost

Annual **Monthly**

\$10,716 **\$893**

for a family of four (2 adults + 2 children) for York County, PA, based on an annual income of **\$62,144**

Source: livingwage.mit.edu

What happens when someone tries to rent?

1. 25-30 percent will be accepted outright without additional conditions to a standard lease
2. 25-30 percent will be accepted conditionally with additional conditions that usually require higher security deposits and/or the need for a co-signer/guarantor
3. 50 will be denied due to credit or rental or criminal history

Source: multifamilyinsiders.com

Housing First versus Treatment First Approaches

Treatment First Approach

Emergency Shelter

Transitional Housing

Permanency

Housing First is a homeless assistance approach that prioritizes providing permanent housing to people experiencing homelessness, thus **ending their homelessness** and serving as a platform from which they can pursue personal goals and improve their quality of life.

Shelter Beds in 2016 Nationwide

	U.S.		
	Total Beds in 2016	Percent Change from 2015	Percent Change from 2009*
Emergency Shelter	263,767	0.1%	23.4%
Transitional Housing	145,229	-9.4%	-30.1%
Permanent Supportive Housing	338,872	6.9%	55.3%
Rapid Re-Housing	77,061	28.3%	288.3%**

Source: US Conference of Mayors, 2016

AVERAGE MONTHLY COST OF HOUSING SOMEONE WHILE HOMELESS



© 2017 [Canadian Observatory on Homelessness](http://www.homelessness.ca)

Community Based Solutions

Partnership Opportunities

- County homeless assistance program
- Homeless shelters
- Churches
- Legislators
- Schools
- Health systems

Supportive services

- Medical
- Substance Abuse
- Mental Health
- Financial
- Basic Needs
- Employment
- Education
- Nutrition
- Case management
- Spiritual Care

Earl and Twanette



Partner with shelters

- Identify individuals who are ready for permanency
- Provide support supportive services and household items
- Apartment Finder
- First and last month rent
- Cost: \$1600

Rapid housing

- Shelter referrals
- Emergency hotel stay
- Food, toiletries, clothing
- Immediate employment
- Transportation
- Childcare
- Support and training
- Cost: \$2000



Homelessness prevention

- Affordable housing
- Advocacy
- Employment
- Housing referrals
- Rental assistance
- Heat and utility assistance
- Home repair

House in a Box



Bus therapy



Zero Barrier Emergency Weather Shelter



Coordinated Entry Specialist



<https://www.morethanshelter.org/>

2nd Chance Renter program

- Prepare people for stable housing
- Provide startup help
- Leverage relationships with landlords to offer leases without credit/rental histories
- Be prepared to step in with hurdle help

Shower ministry



<http://www.ststephenlc.org/news>

Dinner Church



Laundry Love—Venice CA



<https://vimeo.com/99275167>

Micro house community



Lessons learned

1. No Easy Solutions
2. Creativity
3. It takes a Community
4. Coordinate services
5. People will sacrifice own welfare for pets
6. Things can be Messy
7. Unrestricted Cash
8. You'll end up doing more than you planned
9. Have a support team and accountability

Matthew 25

35 For I was hungry and you gave me something to eat, I was thirsty and you gave me something to drink, I was a stranger and you invited me in,
36 I needed clothes and you clothed me, I was sick and you looked after me, I was in prison and you came to visit me.'

37 "Then the righteous will answer him, 'Lord, when did we see you hungry and feed you, or thirsty and give you something to drink? 38 When did we see you a stranger and invite you in, or needing clothes and clothe you? 39 When did we see you sick or in prison and go to visit you?'

40 "The King will reply, 'Truly I tell you, whatever you did for one of the least of these brothers and sisters of mine, you did for me.'